

## UPDATE: THE I3 CONNECTIVITY EXPLORER STATE-WIDE SCHOOL DISTRICTS

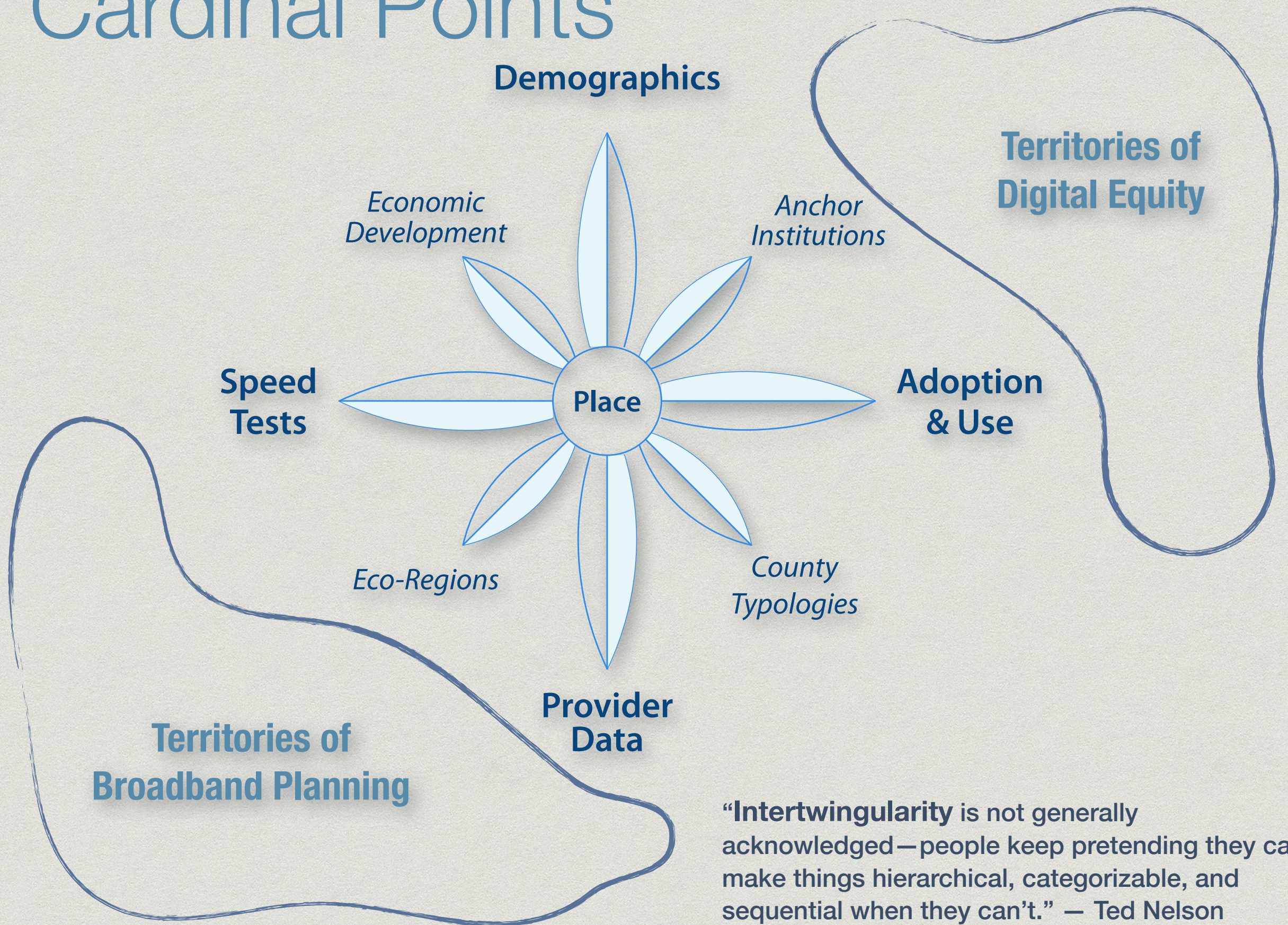
ROBERT A. BALLANCE, PH.D.  
THE CENTER FOR INTERNET AS INFRASTRUCTURE, LLC.  
[BALLANCE@INTERNET-IS-INFRASTRUCTURE.ORG](mailto:BALLANCE@INTERNET-IS-INFRASTRUCTURE.ORG)



Copyright © 2020  
The Center for Internet as Infrastructure, LLC



# Cardinal Points





## *National data, localized*

*U.S. Census  
American Community Survey (ACS)  
FCC Block-Level Population Estimates*

### **Demographics**

*NCES*

*CRA Qualified Tracts  
Opportunity Zones*

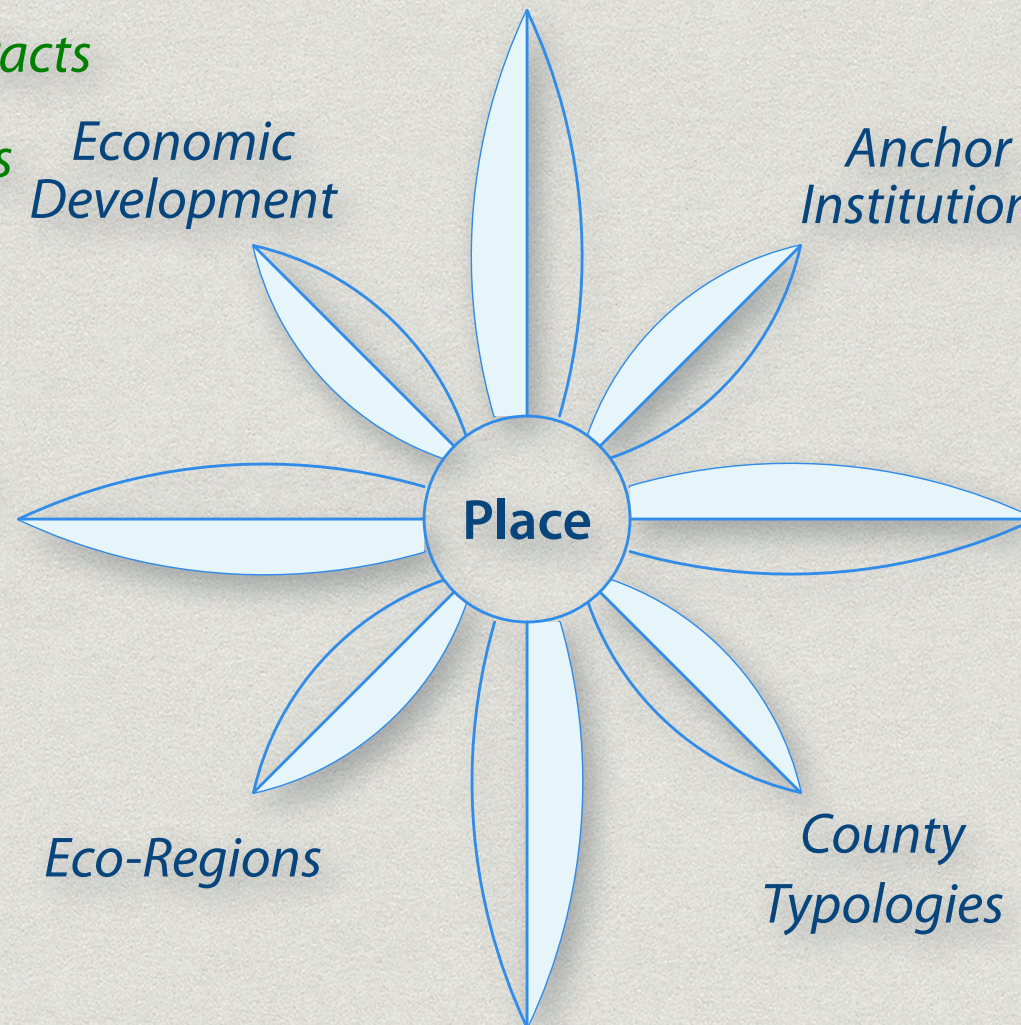
*Economic  
Development*

*Anchor  
Institutions*

*IMLS*

*M-Lab NDT*

### **Speed Tests**



### **Adoption & Use**

*Census ACS  
Internet  
FCC 477  
Adoption*

*Eco-Regions*

*County  
Typologies*

*EPA*

### **Provider Data**

*USDA*

*FCC 477  
Wireline*

*FCC 477  
Mobile*

*...Unexplored datasets*



# Which School Districts are most in need of investment?

There are useful views for that!

## School District Data for Arizona

Back to Sacaton Elementary District

About the data...

COVID-19 school closure status as of 2020-04-06: **Ordered closed for the academic year.**

Show data for

Arizona

View on Map

Export this table (CSV)

File Documentation

All States Data

Name	Type	Enrollment	Families	Households	DDI	Household Density	Median Income	Families in Poverty	(%) FRSL Eligible	Persons of Color	Under 18, no Computer	Under 18, no Internet	W
Sacaton Elementary District	E	556	754 ± 188	1,566 ± 188	100.00	5.57	\$9,206.00 ± \$3,507.00	57.16% ± 11.36%	86.2%	91.16% ± 4.44%	41.20% ± 15.80%	16.30% ± 12.80%	
San Fernando Elementary District	E	18	3 ± 10	12 ± 10	99.71	0.04	NA	0.00% ± 400.00%	NA	8.89% ± 55.53%	NA	NA	
Red Mesa Unified District	U	483	1,445 ± 79	2,087 ± 79	98.69	1.07	\$24,253.00 ± \$2,090.00	44.64% ± 3.81%	70.2%	99.53% ± 0.74%	44.20% ± 5.50%	29.20% ± 5.00%	
Santa Unified District	U	1,716	1,884 ± 133	2,896 ± 133	97.51	1.44	\$23,656.00 ± \$1,722.00	54.14% ± 6.08%	86.5%	96.81% ± 1.54%	59.60% ± 7.80%	12.40% ± 4.70%	
Crown King Elementary District	E	4	22 ± 29	46 ± 29	95.74	0.56	NA	22.73% ± 31.25%	NA	17.65% ± 47.05%	NA	NA	
Wenden Unified District	U	716	1,008 ± 95	1,584 ± 95	93.31	0.93	\$22,623.00 ± \$2,518.00	48.91% ± 3.93%	88.7%	95.55% ±	39.30% ± 11.60%	32.80% ± 9.40%	Te



# School District Data for Arizona

[Back to Conecuh County School District](#)

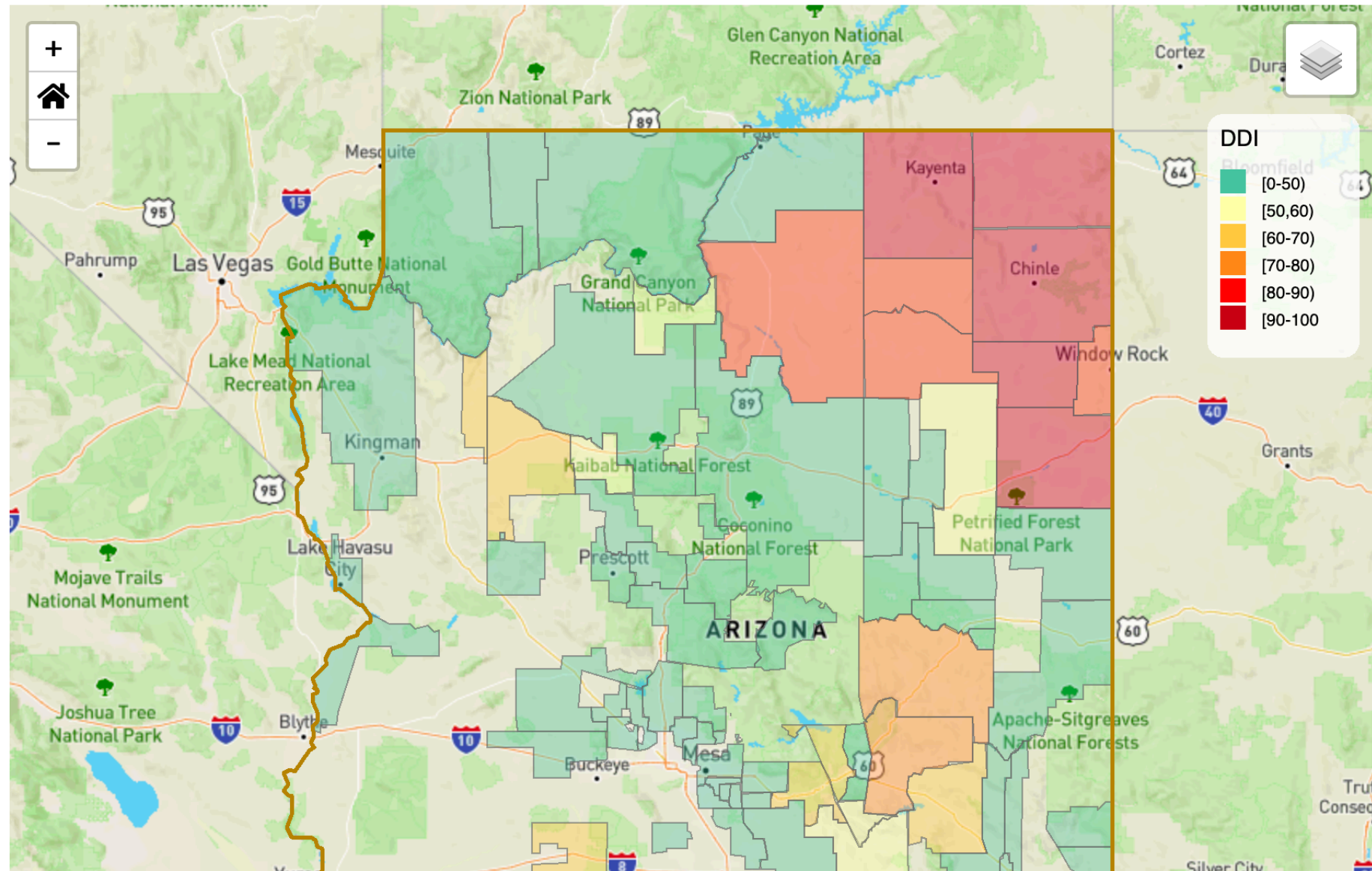
[About the data...](#)

COVID-19 school closure status as of 2020-04-06: **Ordered closed for the academic year.**

Show data for Arizona

[View as table](#)

The [Digital Distress Indicator](#) (DDI) is a measure of digital connectivity. It ranges from 0 to 100 for the state. Higher values indicate more distress.





# You can drill-down to the individual district

Sacaton Elementary District

4,864 ± 754

Population

281.1 mi<sup>2</sup>

Area

17 persons/mi<sup>2</sup>

Average Population Density

\$2,810,187

[Annual Economic Benefit of Broadband](#)

\$9,206 ± \$3,507

Median Household Income

57.16% ± 11.36%

Household Poverty Rate

[Eco Regions](#)

10.2 Warm Deserts

[County Info](#)

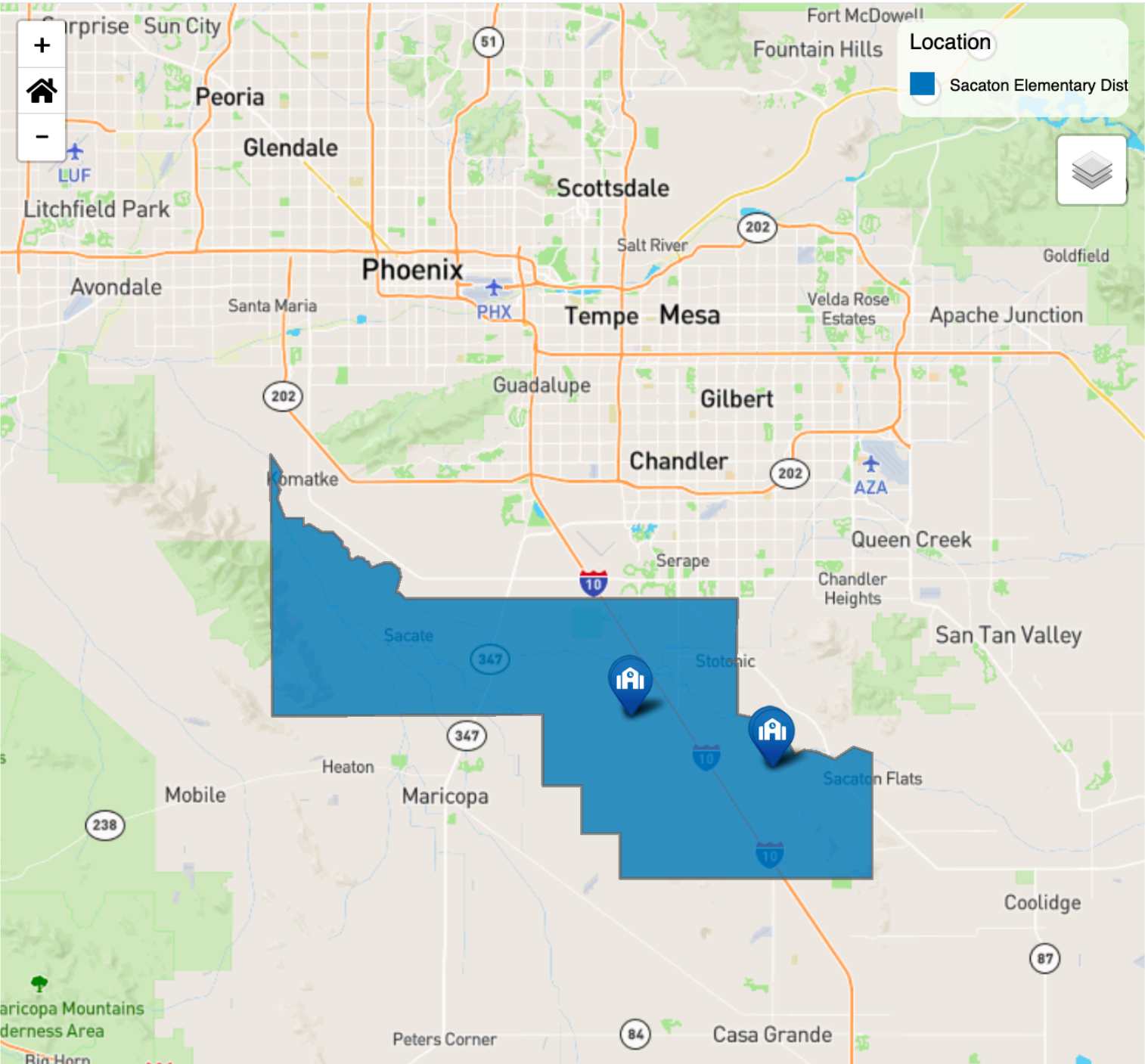
Pinal County

Metro:Nonspecialized

99%

of blocks have *no* wireline providers  
at 25↓/3↑ or faster  
Satellite providers are *not* included.

[Update preference](#)



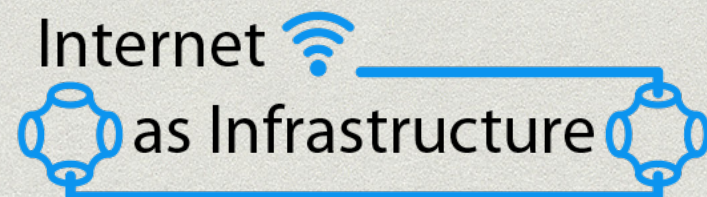


## I3 Connectivity Explorer

- \* <https://i3connect.org/>

## The Center for Internet as Infrastructure, LLC

- \* <https://internet-is-infrastructure.org/>



Access is free

Fortune Courtesy: Lu Torres, Photo Courtesy: Erin McDuff